

*Photographs*



Photo 1: Ohio Edison Dam in Gorge MetroPark looking east. This photograph shows dense residential development on either side of the gorge. The main part of the park is on the left side of the photograph, including the fishing pier on the impoundment, trails, and a viewing area just downstream of the dam. The experimental turbine is the white pipe over the dam on the right side. The penstock cradles are the dashed feature on the right side of the photograph and downstream of the dam. The proposed power house will be located near the bottom of the photograph to the right of the river. The access road/trail are on the right side of the photograph. The transmission line pylons are visible along the access road.

*Photographs*



Photo 2: From entrance looking east across Front Street toward inactive power plant. December 4, 2004



Photo 3: Impoundment looking from fishing pier toward dam. The blue structure with the white pipe arching over the dam is part of the experimental turbine that will be removed. December 4, 2004

*Photographs*



Photo 4: Park path entrance and trail to dam. The path was formerly a railroad. The transmission lines follow the path (note pylons). December 4, 2004.



Photo 5: Path/transmission lines by dam. The fenced control box is for the combined sewer overflow. December 4, 2004.

*Photographs*



Photo 6: Dam viewed from north side. The wooden structure in the foreground is viewing platform in the park. The large white pipe is part of the experimental turbine that will be removed. December 4, 2004.

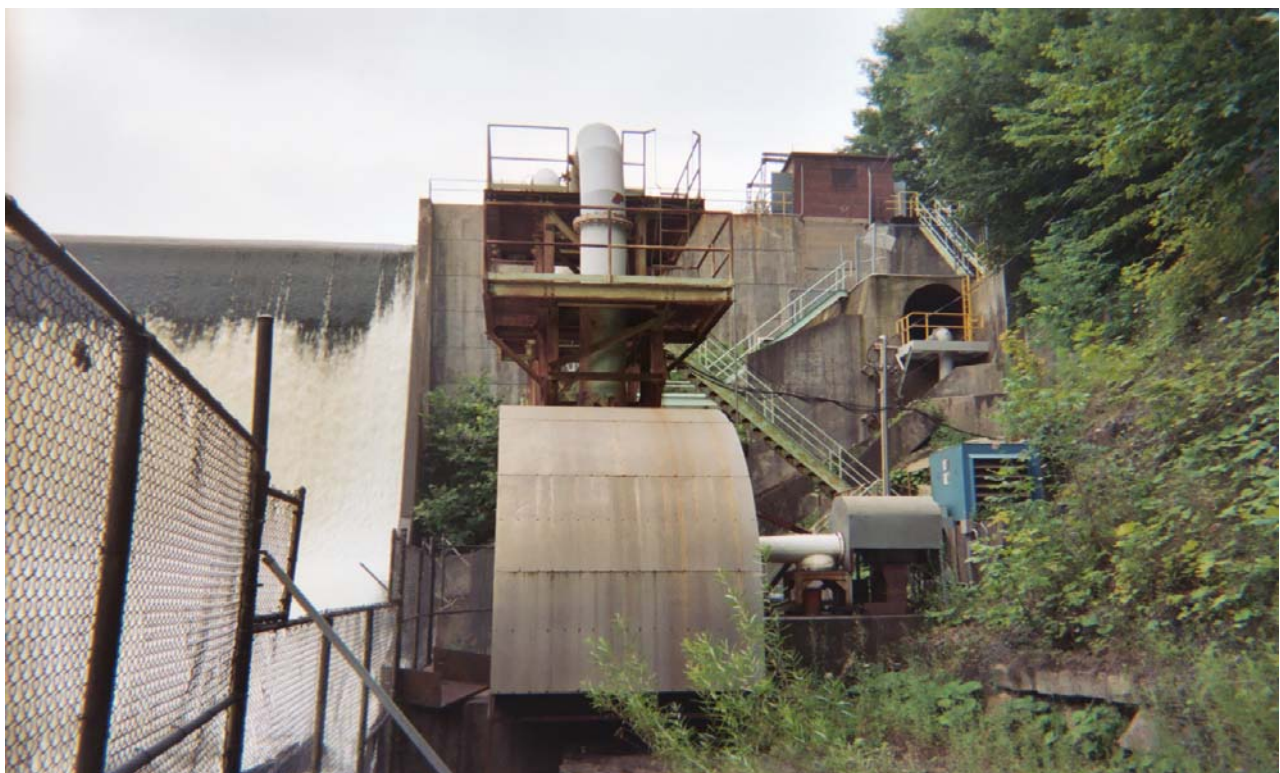


Photo 7: Dam viewed from south side of river looking east. The structure in the center is the experimental turbine that will be removed. The original penstock opening is the large circle behind the yellow guardrail. This opening will be re-used. July 2004.

*Photographs*



Photo 8: View of dam looking east. December 4, 2004.



Photo 9: Penstock cradles that will be re-used. The dam is in the background. December 4, 2004.

Client  
Project No.:

AHS  
81216

Earth Tech, Inc.  
5555 Glenwood Hills Parkway, SE • PO Box 874  
Grand Rapids, MI 49588-0874 (616) 942-9600

*Photographs*



Photo 10: Approximate location of proposed powerhouse. View from south back looking across river to north. December 4, 2004.